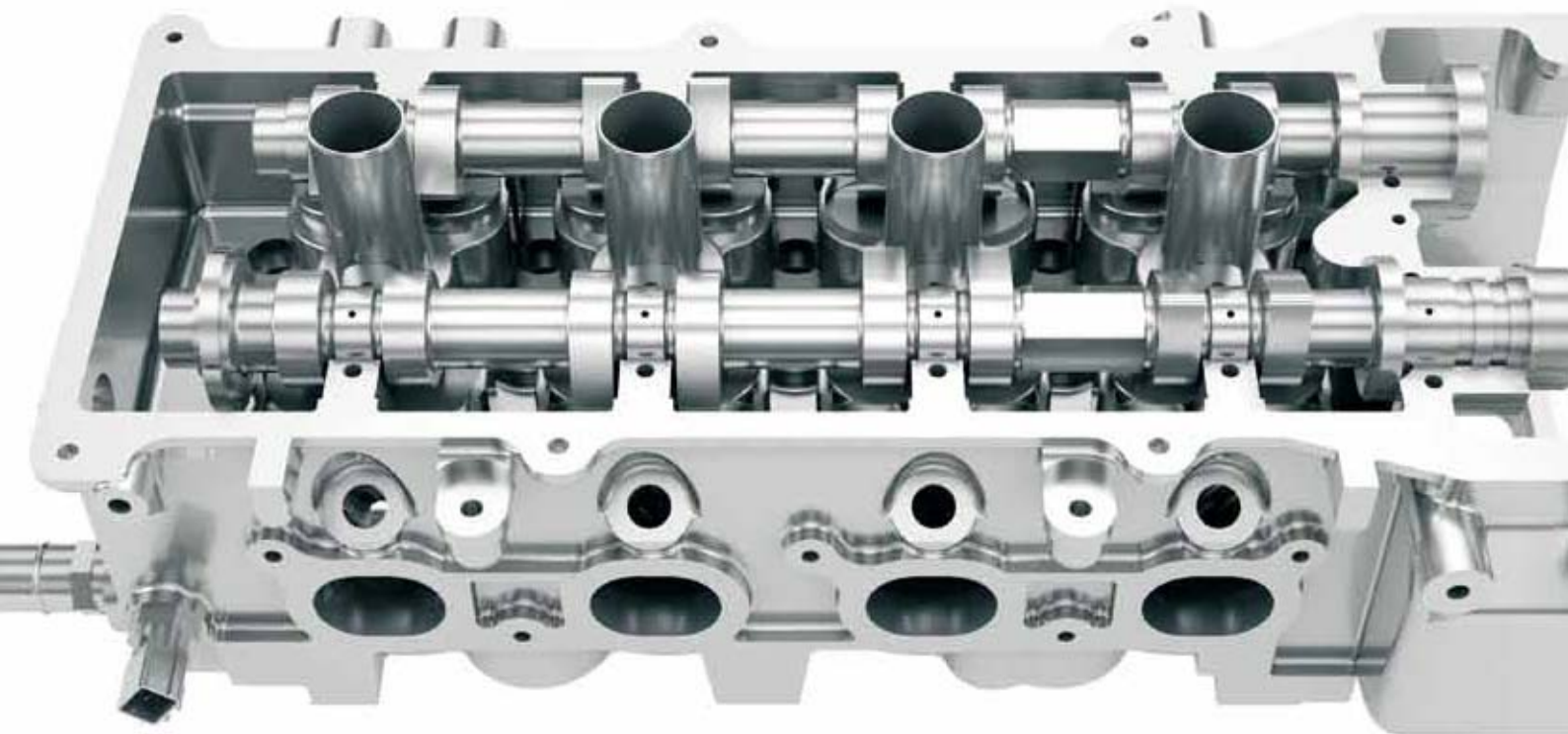




Rotating



Applicable to all general cutting tools such as high-speed steel, solid carbide, carbide-tipped, cermet, PCD, and PCBN with or without internal coolant.



Rotating



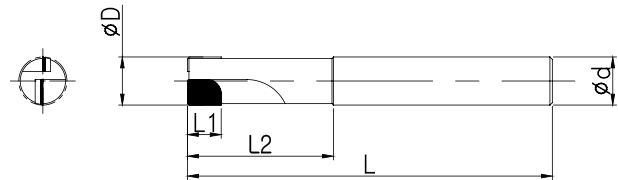




Rotating
Endmill

Square endmill

The range from D3 to D20 with various edge length is common in use.

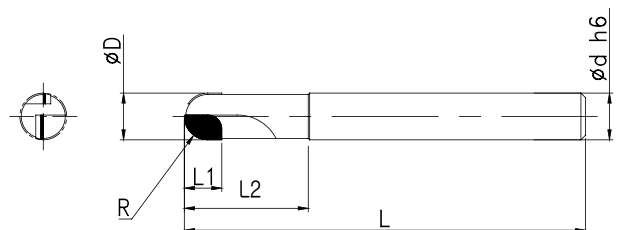
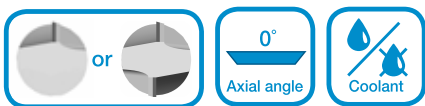


Item No.	Dimensions (mm)					
	D	d	L1	L2	L	Z
EDES 10303-0515-60	3	3	5	15	60	1
10404-0715-60	4	4	7	15	60	1
10505-1020-60	5	5	10	20	60	1
10606-1020-60	6	6	10	20	60	1
20808-1020-60	8	8	10	20	60	2
21010-1030-75	10	10	10	30	75	2
21212-1035-85	12	12	10	35	85	2
21616-1035-85	16	16	10	35	85	2
22020-1040-100	20	20	10	40	100	2

- Over center, Oil hole: Please contact separately for further discussion.
- EDES: Ehwa pcD/cvD Endmill Square

Ball nose endmill

Teeth, 1Z or 2Z can be determined by diameter.



Item No.	Dimensions (mm)					
	D	d	L1	L2	L	Z
EDEB 10303-0515-60	3	3	5	15	60	1
10404-0715-60	4	4	7	15	60	1
10505-1020-60	5	5	10	20	60	1
10606-1020-60	6	6	10	20	60	1
20606-1020-60	6	6	10	20	60	2
20808-1020-60	8	8	10	20	60	2
21010-1020-80	10	10	10	20	80	2
21212-1020-80	12	12	10	20	80	2

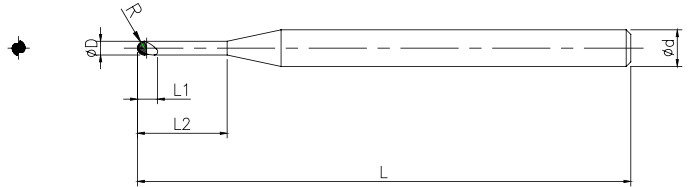
- Oil hole : Please contact separately for further discussion.
- EDEB : Ehwa pcD/cvD Endmill Ballnose

Ball nose endmill

The range from D3 to D20 with various edge length is common in use.



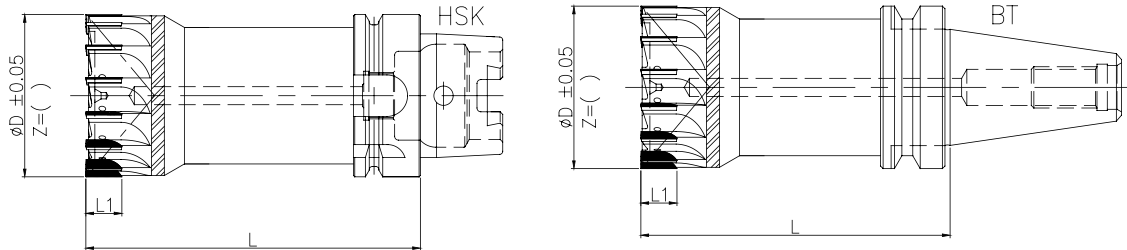
- Design:
- Diameter: 2,0~3,0mm
- N of blades: 2
- Helix angle: 35



Item No.	Dimensions (mm)					
	D	R	L1	L2	L	d
EBEB 20204-0104-50	2	1	1.2	4	50	4
20204-0106-50	2	1	1.2	6	50	4
20204-0108-50	2	1	1.2	8	50	4
20204-0110-50	2	1	1.2	10	50	4
20204-0112-50	2	1	1.2	12	50	4
20204-0114-50	2	1	1.2	14	50	4
20204-0116-50	2	1	1.2	16	50	4
20204-0118-50	2	1	1.2	18	50	4
20204-0120-50	2	1	1.2	20	50	4
20306-1.508-66	3	1.5	1.8	8	66	6
20306-1.510-66	3	1.5	1.8	10	66	6
20306-1.512-66	3	1.5	1.8	12	66	6
20306-1.516-66	3	1.5	1.8	16	66	6
20306-1.520-66	3	1.5	1.8	20	66	6
20306-1.525-66	3	1.5	1.8	25	66	6
20306-1.530-66	3	1.5	1.8	30	66	6

- EBEB : Ehwa pcBn Endmill Ballnose

Monoblock type

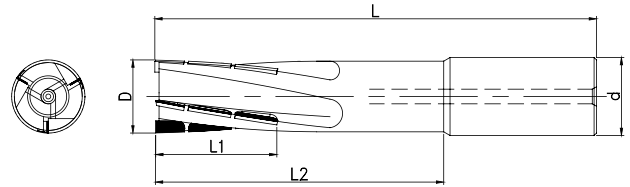


Item No.	Dimensions (mm)				
	$\varnothing D$	d	L_1	L	type
EDEM 0832-HSKA63	30	8	14	150	HSKA63
0840-HSKA63	40	8	14	150	HSKA63
0850-HSKA63	50	8	14	150	HSKA63
1463-HSKA63	63	14	14	150	HSKA63
1463-HSKA100	63	14	14	150	HSKA100
1463-BT40	63	14	14	150	BT40

- EDEM : Ehwa pcD/cvD Endmill Monoblock
- Available type : HSK type - HSK 32, 40, 50, 63, 100
Taper type - BT 30, 40, 50 / SK 30, 40, 50 / CAT 30, 40, 50

Special Helical endmill

This special helical endmill can achieve high performance with long tool life. The cutting force of the helical design is outstanding. Therefore, it is suitable for high removal rate.

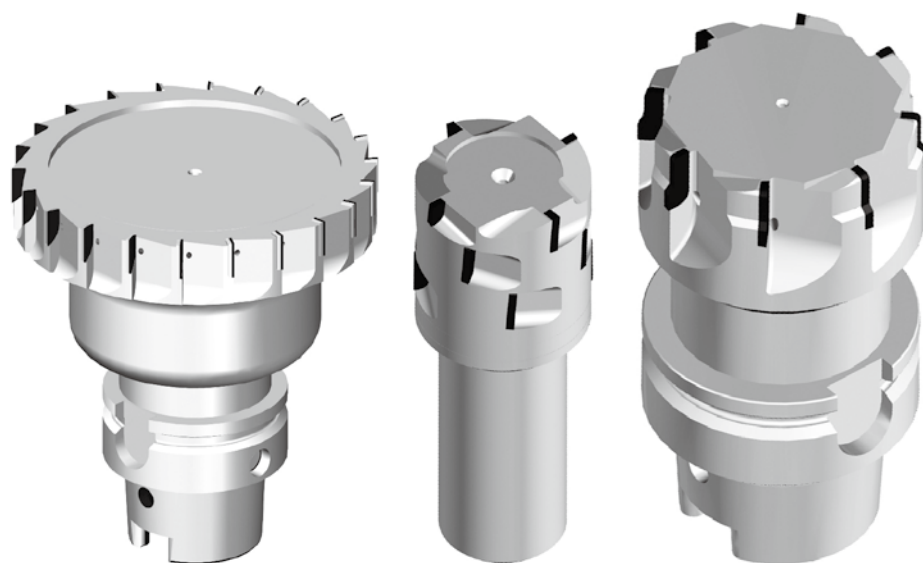
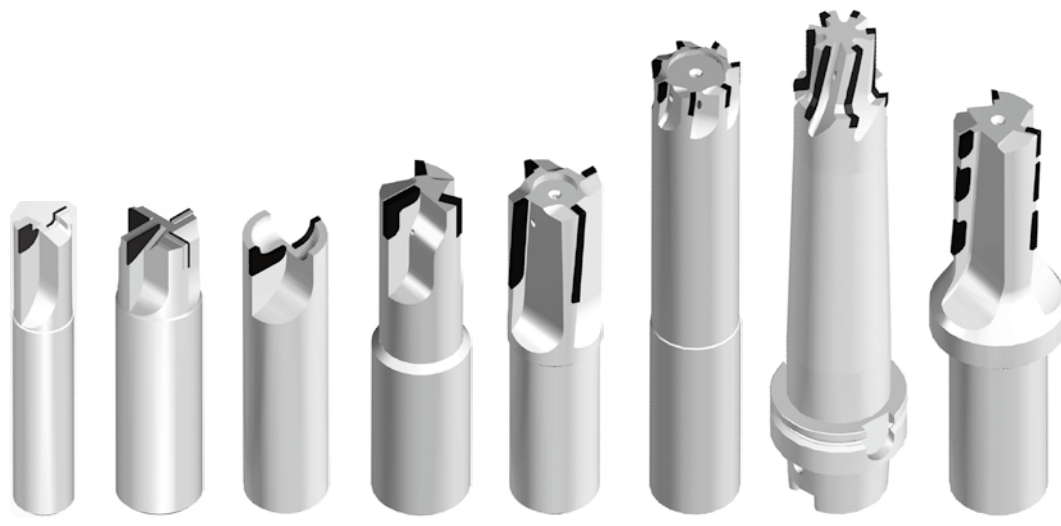


Item No.	Dimensions (mm)					
	D	d	L1	L2	L	F
EDEH 31616-30-120	16	16	30	50	120	3
32020-30-120	20	20	30	50	120	3
32525-30-120	25	25	30	50	120	3
33032-30-120	30	32	30	50	120	4

■ EDEH : Ehwa pcD Endmill Helix

Customized design

- Face, slot, chamfer, profile, etc.
- Optimized tooling service depending on the customer's demand.

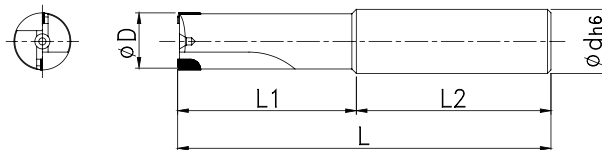


Rotating_
Reamer



Rotating

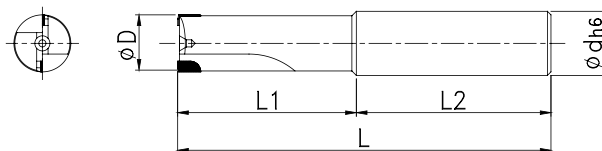
Normal type



Item No.	Dimensions (mm)					
	ØD	Ød	L1	L2	L	Z
EDRS 20406-15-60	4	6	15	45	60	2
20506-15-60	5	6	15	45	60	2
20606-25-80	6	6	25	55	80	2
20808-25-80	8	8	25	55	80	2
21010-40-100	10	10	40	60	100	2
21212-40-100	12	12	40	60	100	2

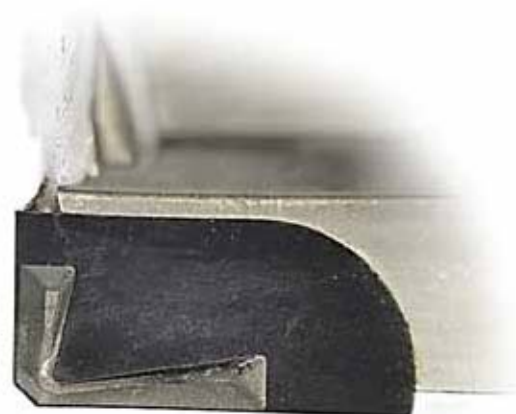
- EDRS : Ehwa pcD Reamer Straight flute

Chip breaker type



Item No.	Dimensions (mm)					
	ØD	Ød	L1	L2	L	Z
EDRS CB 20406-15-60	4	6	15	45	60	2
20506-15-60	5	6	15	45	60	2
20606-25-80	6	6	25	55	80	2
20808-25-80	8	8	25	55	80	2
21010-40-100	10	10	40	60	100	2
21212-40-100	12	12	40	60	100	2

- EDRS CB : Ehwa pcD Reamer Straight flute Chip Breaker
- Chip breaker design : varies with cutting conditions



Normal type





Reamer

Customized design

- Face, slot, chamfer, profile, etc.
- Optimized tooling service depending on the customer's demand.





Rotating_
Drill

Drill - PCD

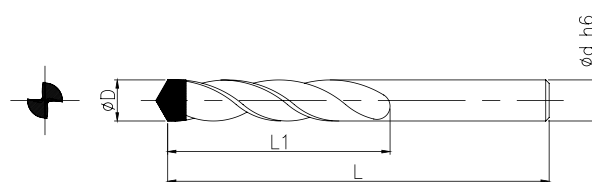
PCD helical drill



HELIX E



HELIX S



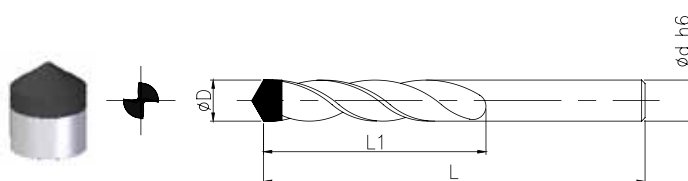
Item No.	Dimensions (mm)			
	ØD	L1	L	Ød
EDDHE(or S) 20303-30-80	3	30	80	3
20404-30-80	4	30	80	4
20505-30-80	5	30	80	5
20606-30-80	6	30	80	6
20707-35-90	7	35	90	7
20808-35-90	8	35	90	8
20909-40-100	9	40	100	9
21010-40-100	10	40	100	10
21111-50-110	11	50	110	11
21212-50-110	12	50	110	12

■ EDDHE : Ehwa pcD Drill Helix Economic PCD / EDDHS : Ehwa pcD Drill Helix Sandwich PCD

PCD helical drill



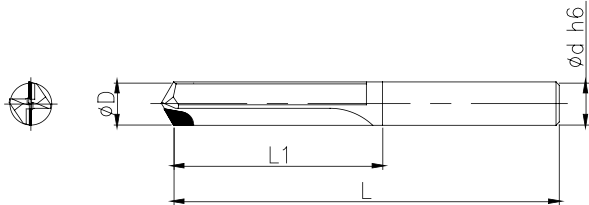
HELIX D



Item No.	Dimensions (mm)			
	ØD	L1	L	Ød
EDHDD 20303-30-80	3	30	80	3
20404-30-80	4	30	80	4
20505-30-80	5	30	80	5
20606-30-80	6	30	80	6
20707-35-90	7	35	90	7
20808-35-90	8	35	90	8
20909-40-100	9	40	100	9
21010-40-100	10	40	100	10
21111-50-110	11	50	110	11
21212-50-110	12	50	110	12

■ EDDHD : Ehwa pcD Drill Helix Dom PCD

PCD burnishing drill



Item No.	Dimensions (mm)			
	ØD	L1	L	Ød
EDDS 20505-30-80	5	30	80	5
20606-30-80	6	30	80	6
20707-35-90	7	35	90	7
20808-35-90	8	35	90	8
20909-40-100	9	40	100	9
21010-40-100	10	40	100	10
21111-50-110	11	50	110	11
21212-50-110	12	50	110	12

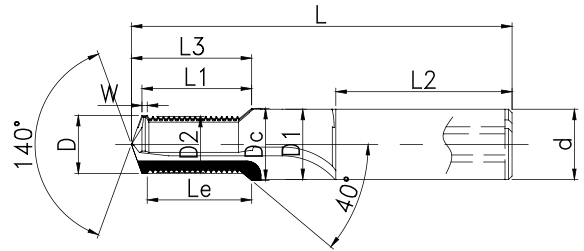
■ EDDS : Ehwa pCD Drill Straight flute

Customized design

- Face, slot, chamfer, profile, etc.
- Optimized tooling service depending on the customer's demand.



Drill thread milling tool

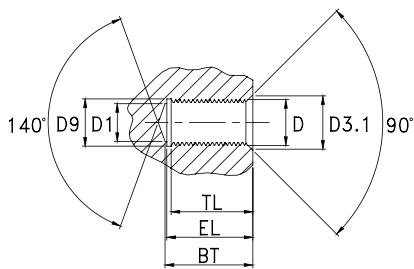


Item No.	Dimensions (mm)											
	L	L3	L1	L2	W	D	d	D1	Dc	D2	Z	
EDTMS 1.5D	M8-1.25	70.3	14.4	13.4	40	1.3	6.8	10	9	8.3	6.45	2
	M10-1.5	74.5	18.9	17.6	45	1.5	7.5	12	11	10.3	8.08	2
	M12-1.75	83.8	21.8	20.2	45	1.5	10.3	14	13.5	12.3	9.74	2
2.0D	M8-1.25	74	18.2	17.1	40	1.3	6.8	10	9	8.3	6.45	2
	M10-1.5	79	23.4	22.1	45	1.5	8.5	12	11	10.3	8.08	2
	M12-1.75	89	27.1	25.5	45	1.5	10.3	14	13.5	12.3	9.74	2
2.0D	M14-2.00	102	32.8	30.9	48	1.5	12	16	15.5	14.3	11.35	2
	M16-2.00	102	37.1	35	48	1.5	14	18	17.5	16.3	13.28	2
	2.5D	M8-1.25	74	23.2	22.1	40	1.3	6.8	10	9	8.3	6.45
2.5D	M10-1.50	79	27.9	26.6	45	1.5	8.5	12	11	10.3	8.08	2
	M12-1.75	89	34.1	32.5	45	1.5	10.3	14	13.5	12.3	9.74	2
	M14-2.00	102	38.8	36.9	48	1.5	12	16	15.5	14.3	11.35	2
2.5D	M16-2.00	102	45.1	43	48	1.5	14	18	17.5	16.3	13.28	2

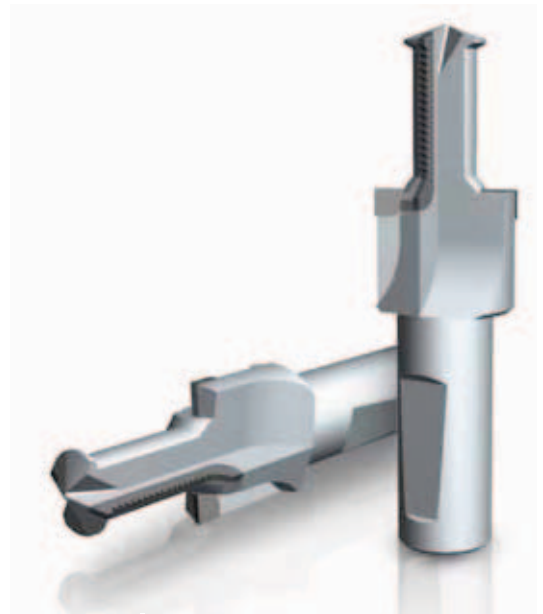
■ EDTMS : Ehwa Dia Thread Mill Straight flute

Thread engagements for BGF

(for metric ISO thread DIN13, DIN 8140)

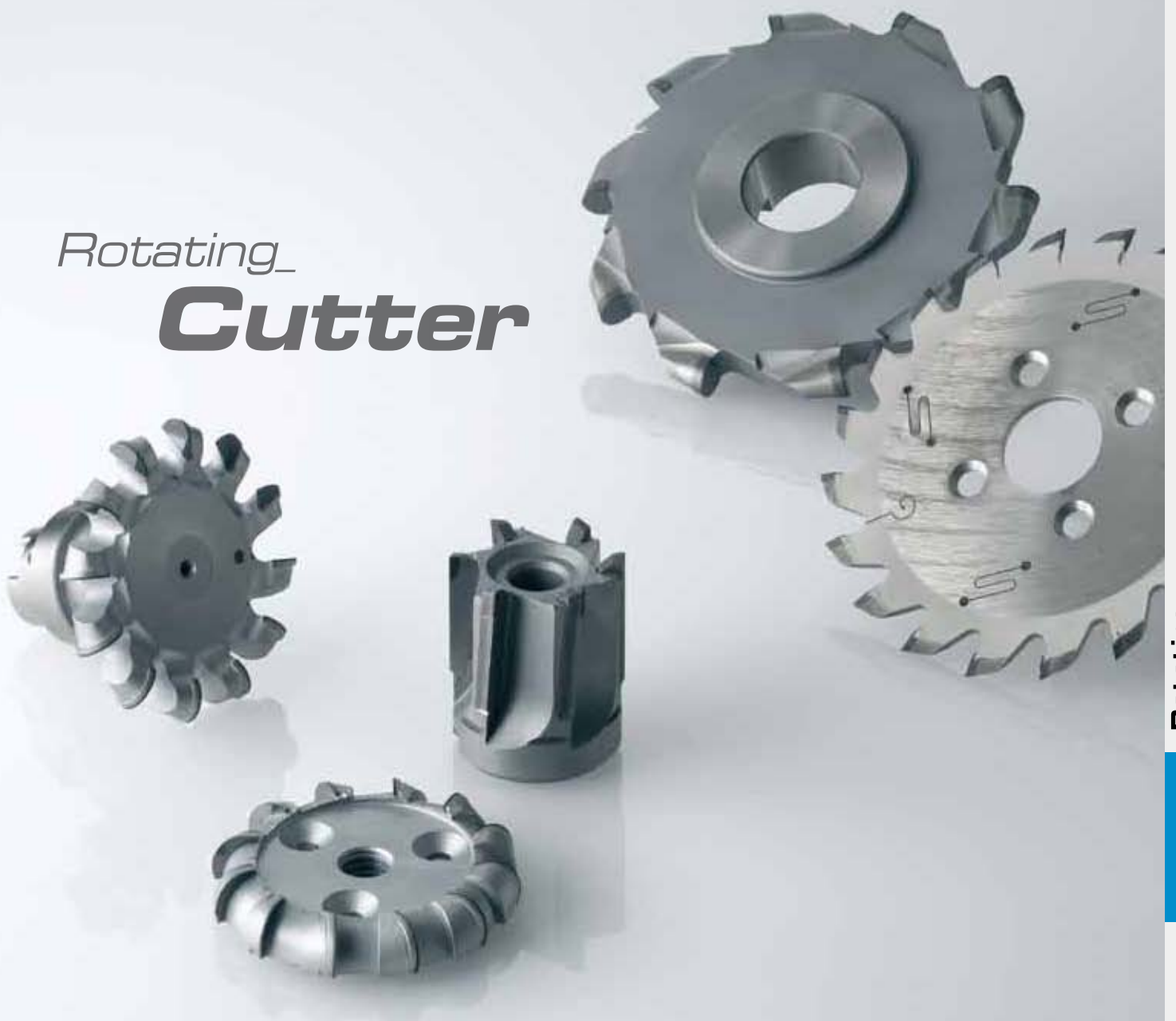


BT = Drill depth
EL = Thread engagement
TL = Full thread length



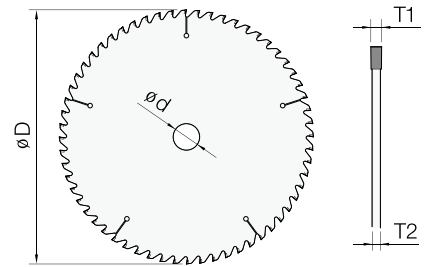
M	1.5 x D						2.0 x D						2.5 x D					
	D1	BT	D3.1	D9	EL	TL	D1	BT	D3.1	D9	EL	TL	D1	BT	D3.1	D9	EL	TL
M8	6,75	13,35	8,30	8,41	12,15	10,45	6,75	17,10	8,30	8,41	15,90	14,20	6,75	22,10	8,30	8,41	20,90	19,20
M10	8,50	17,60	10,30	10,54	16,06	14,00	8,50	22,10	10,30	10,54	20,60	18,50	8,50	26,60	10,30	10,54	25,10	23,00
M12	10,30	20,25	12,30	12,65	18,45	16,35	10,30	25,50	12,30	12,65	23,70	21,60	10,30	32,50	12,30	12,65	30,70	28,60
M14	12,00	22,90	14,30	14,81	20,90	18,60	12,00	30,90	14,30	14,81	28,90	26,60	12,00	36,90	14,30	14,81	34,90	32,60
M16	14,00	27,00	16,30	16,88	25,00	22,60	14,00	35,00	16,30	16,88	33,00	30,60	14,00	43,00	16,30	16,88	41,00	38,60

Rotating_
Cutter



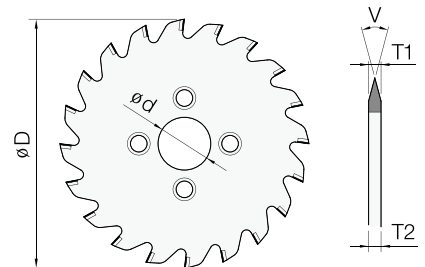
Cutter - PCD

PCD saw



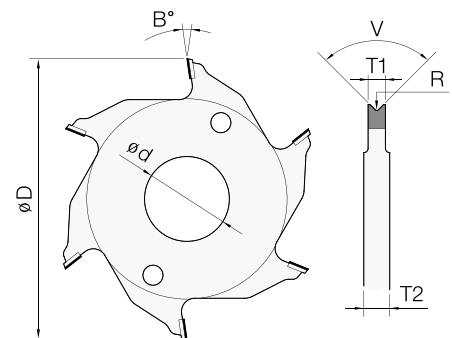
Item No.	Dimensions (mm)				
	$\varnothing D$	$\varnothing d$	T1	T2	Z
EDSC-255	255	25.4 / 31.75	2.2 / 2.5 / 3 / 3.2	2.2	40 / 60 / 80
EDSC-305	305	25.4 / 31.75	2.2 / 2.5 / 3 / 3.2	2.2	40 / 60 / 80
EDSC-355	355	25.4 / 31.75	2.2 / 2.5 / 3 / 3.2	2.2	40 / 60 / 80

PCD V-cutter



Item No.	Dimensions (mm)					
	$\varnothing D$	$\varnothing d$	T1	T2	V	Z
EDVC 100-V	100	20 / 25.4	2	2	35° / 40° / 45°	20 / 30
EDVC 105-V	105	20 / 25.4	2	2	35° / 40° / 45°	20 / 30
EDVC 110-V	110	20 / 25.4	2	2	35° / 40° / 45°	20 / 30
EDVC 120-V	120	20 / 25.4	2	2	35° / 40° / 45°	20 / 30

PCD bevel cutter



Item No.	Dimensions (mm)						
	$\varnothing D$	$\varnothing d$	T1	T2	V	R	B
EDBC 80-B	80	25.4	5	6.5 / 7 / 7.5	40° / 60° / 90°	0.2 / 0.5 / 1	3° / 4° / 6° / 8°
EDBC 83-B	83	25.4	5	6.5 / 7 / 7.5	40° / 60° / 90°	0.2 / 0.5 / 1	3° / 4° / 6° / 8°
EDBC 90-B	90	25.4	5	6.5 / 7 / 7.5	40° / 60° / 90°	0.2 / 0.5 / 1	3° / 4° / 6° / 8°

Customized design

- Face, slot, chamfer, profile, etc.
- Optimized tooling service depending on the customer's demand.

